

EVERY STUDENT. EVERY DAY.

Educational levies supporting equal access to education for ALL students in the Issaquah School District.



Prop. 1: Renewal Educational Programs & Operations (EP&O) Levy



The EP&O Replacement Levy represents 15.6% of the district's revenue and continues funding for **student services, academics programs and support services:**

15.6%

Local Funding Filling the Gaps



Safety and Security



Mental Health Supports



Nurses



Special Education



State and Federal Funding



Prop. 2: Renewal Capital (Technology and Construction) Levy



The Capital Replacement Levy includes technology, building updates for maintaining safety (HVAC, roof repairs, etc.) and helps complete construction of High School #4.

Student and Classroom Technology



85% maintains current technology services
15% provides critical enhancements

Maintaining our buildings, Ensuring Room to Learn

\$53.8M for:
Safety Repairs
Security Updates
High School #4



Prop. 3: Transportation (School Bus) Levy



The 1-year measure would pay to purchase 64 buses when combined with state reimbursement dollars. This keeps our buses current, meeting safety standards, and maximizes bus efficiency to reduce transportation costs.

1.4

million miles driven each school year



7,500

students transported each morning and afternoon

EQUAL ACCESS TO EDUCATION FOR ALL

The total combined rate, including the three measures above, is projected to be \$3.56 per \$1,000 of assessed property value. The average rate from 2021-2022 for the previous measures was \$3.51 per \$1,000 of assessed property value. All local education levy dollars stay in our district to support Issaquah School District students, staff and schools.



Scan this QR code for more information.

Please vote by April 26, 2022.



ISSAQUAH
SCHOOL DISTRICT 411

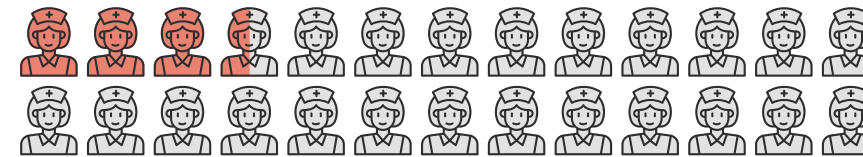


Local Dollars Support Local Kids

Voters in the Issaquah School District will be asked to consider three key funding levies on the April 26 ballot. These measures help cover the costs of programs and positions not fully paid for by the state, such as safety and security, special education, school nurses, counselors and mental health supports; as well as technology, critical repairs, construction, and transportation costs (bus drivers, tires, maintenance, and more.). Renewal of our district's expiring levies **ensures ALL students will continue to have access** to learning opportunities, quality teaching, tech resources, and support for four more years.



Nurses



The state funds 3.5 nurses for our nearly 20,000 students at 27 schools. Local levy dollars enable the ISD to employ 26 nurses, ensuring each school has a dedicated RN or LPN on staff.

Important Election Dates

April 6

Ballots mailed to voters

April 18

Online or mail-in voter registration due*

*Voters may register to vote in person up until election day

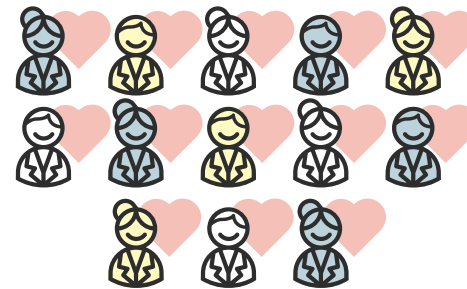
April 26

ELECTION DAY

Ballots must be postmarked or returned to a ballot drop box by 8 p.m. No stamps are needed.



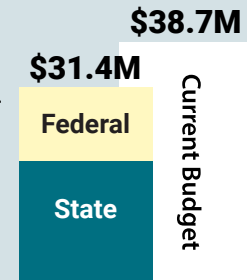
Mental Health Counselors



Supporting students' mental and social-emotional well-being is incredibly important to overall student success. The EP&O levy provides 13 contracted mental health counselors through Swedish Medical Center, available to all students.

Special Education

Thanks to the EP&O levy, local dollars continue to provide direct support for bridging the funding gap for special education services. These funds ensure all students have access to needed supports and the same opportunities.



Combined Levy Proposals

Year	EP&O Levy	Cost/\$1000 Assessed Value (est.)	Tech & Capital Levy	Cost/\$1000 Assessed Value (est.)
2023	\$61,000,000	\$1.43	\$31,472,000	0.73
2024	\$64,000,000	\$1.43	\$35,957,000	0.81
2025	\$67,000,000	\$1.42	\$36,561,000	0.78
2026	\$70,000,000	\$1.42	\$37,320,000	0.75
Transportation (Bus) Levy		2023	\$3,000,000	0.07

If approved, the estimated combined tax rate for our measures from 2023-2026 is projected to be \$3.56 per \$1,000 assessed property value.

Local Levies Support ALL Students

Thanks to our levies:

- ALL schools have a school nurse and health room specialist.
- ALL students have access to both a mental health counselor and school guidance counselor.
- ALL students will learn in up-to-date and safe school facilities.
- ALL students will have increased access to a laptop device.
- ALL K-12 students will have access to STEM curriculum or classes.
- ALL comprehensive high schoolers get an extra elective or Career & Technical Education (CTE) class period.